



## Isuzu D-MAX and Mazda BT-50 Dual Cab MY21 2021 on Rock Sliders

### **IMPORTANT! – READ BEFORE INSTALLATION**

- When installed in accordance with these instructions, the front protection bar does not affect the operation of the vehicles SRS airbags.
- This product must be installed exactly as per these instructions using only hardware supplied.
- Take a few moments to read instructions thoroughly before beginning work.
- In the event of damage to any bar component please contact OFFROAD ANIMAL to arrange repair/replacement of components.
- Do not use this product for any vehicle make or model other than that specified on these instructions.
- Do not remove labels from this product.
- This product and its fixings must not be modified in any way unless stated in these fitting instructions.
- The installation of this product is recommended for trained personnel.
- These instructions are correct at time of publication. OFFROAD ANIMAL cannot be held responsible for the impact of any changes subsequently made by the vehicle manufacturer. If you find something has changed, please contact us to let us know!
- During installation it is the duty of the installer to check correct operation/clearances of all components.
- If Instructions are to be printed for reference in the workshop, it is recommended that they are printed in colour, for best legibility.

## GENERAL CARE AND MAINTENANCE

Only wash the product with a PH neutral car wash to prevent paint damage and discolouration.

Plastic parts may be maintained with silicone spray.

Do not use acidic or alkaline based cleaning products.

It is important to perform regular checks (pre trip or on an annual basis) on the installed product. Checks include:

- Visual inspection for damage (eg. cracks, chips, dents etc.)
- Electrical wiring is not rubbing anything or worn out
- Bolts are torqued to correct specification (see torque guide below)

For touching up small stone chips, Offroad Animal recommends the following paint products:

- Dupli-Color Trim & Bumper Paint Black (TB101)
- VHT Hood, Bumper & Trim Paint Black (SP27)

## BOLT TORQUE SETTINGS

Use the following bolt torques on all fasteners, unless otherwise specified.

Always use a torque wrench to set correct torque settings. Ensure torque wrench is set to Nm unit of measurement. Otherwise perform conversion to lb-ft.

Size	Torque Nm
M5	5 Nm
M6	9 Nm
M8	22 Nm
M10	44 Nm
M12	77 Nm

## PARTS LISTING

**IMPORTANT:** Check all parts are present before beginning work! Contact OFFROAD ANIMAL if something is missing.

### Main Parts – In the Box

Qty	Part Number	Description	Image
2	E-0002-1800	Slider extrusion - 1800MM	
2	B-0207	Slider Step PX Ranger	
1	RS-IDM-RG-21-ASM2L	Dmax Slider Front Mount Left Hand	
1	RS-IDM-RG-21-ASM2R	Dmax Slider front Mount Right hand	

4	RS-IDM-RG-21-ASM1	DMAX SLIDER COM MOUNT	
4	B-0584	Shim	
2	COM-RS-AEC	Slider End Cap Angled	
2	COM-RS-ECM	Slider End Cap Angled Mirrored	
4	NP-COM-M10-190-SLIM	Nut plate M10 Slim	

**Small Parts – Contained in Small Parts Kit Bag**

Qty	Part Number	Description
<b>4</b>	M12 FLAT WASHER	M12 FW
<b>4</b>	M12X130 GR8.8	Bolt Hex, M12X130x1.75, GR8.8 ZP
<b>32</b>	M10 x 25	Bolt Hex, M10X25x[1.5], GR8.8 ZP
<b>32</b>	M10 FLANGE NUT	Flange Nut, M10x1.5 G8.8 ZP
<b>30</b>	M8 NUT	Hex Nut, M8x1.25 G8.8 ZP
<b>20</b>	M8 X 20 BHCS BLACK ZINC	SCREW, BUTTON HEAD CAP, M8X20X1.25 BLACK ZP
<b>34</b>	M8 FLAT WASHER- BLACK ZINC	M8 FW- BLACK ZINC
<b>6</b>	M10 X 30	Bolt Hex, M10x30x[1.5] G8.8 ZP
<b>6</b>	M10 FW	M10 Flat Washer
<b>4</b>	M12 FLANGE NUT	Flange Nut, M12x1.75 G8.8 ZP
<b>14</b>	M8X20 CAP SCREW	CAP SCREW, M8X20X1.25 GR10.9 ZP
<b>2</b>	OFA-LOGO	OFFROAD ANIMAL METAL LOGO

TOOLS REQUIRED

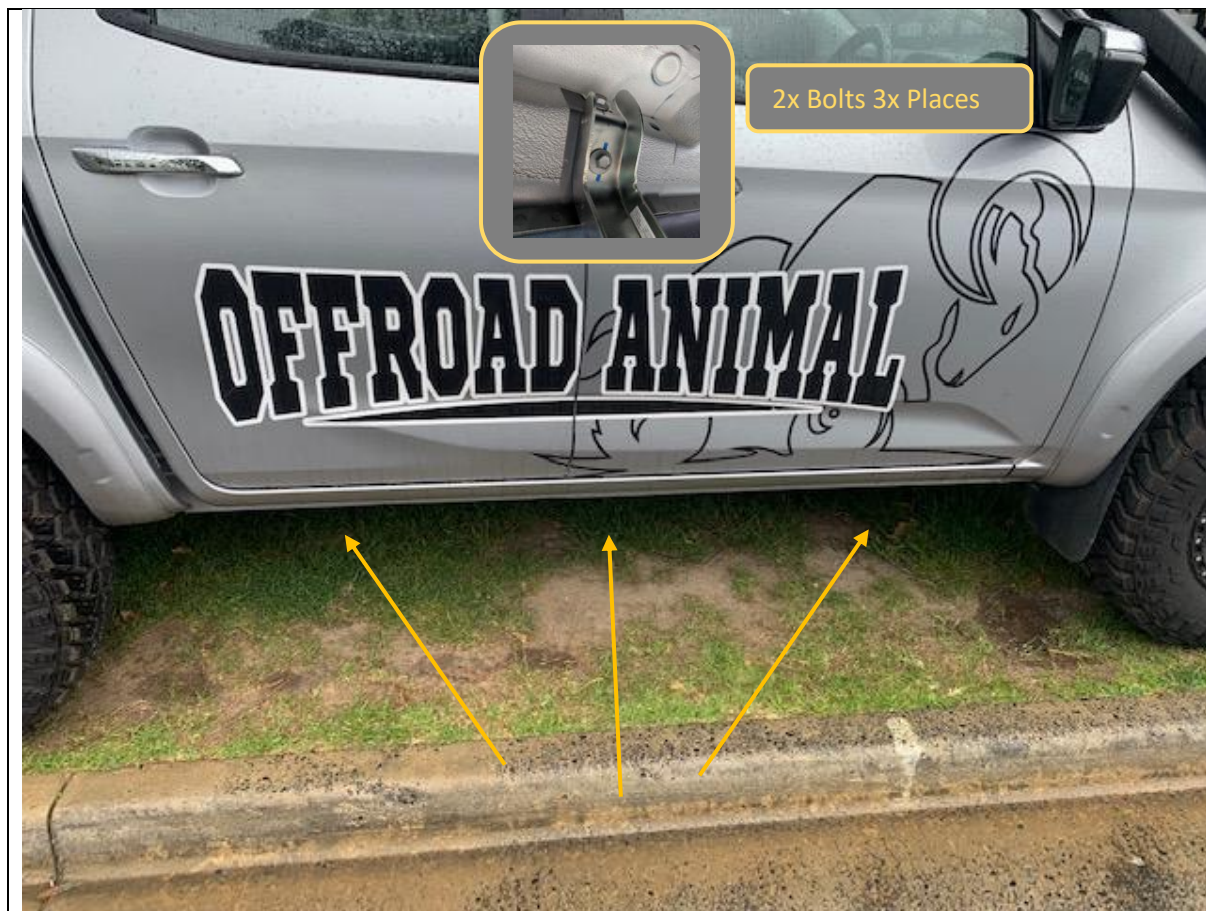
The following tools will be required to install the product.

Hand Tools	Power Tools	Workshop Equipment
Metric Socket Set 10mm,12mm,15mm,16mm,17mm,18mm-19mm Socket Extension Bar Metric Spanner Set 10-19mm Hex (Allen) Key Set 4-6mm Flat Blade Screwdriver	Electric/Air Impact Driver (Optional)	Hydraulic Floor Jack

## WORKSHOP SAFETY

It is the responsibility of the installer to always complete works in a safe manner. Make sure the following safety equipment is available and precautions are observed whilst fitting this product.

<p>Hearing Protection</p> 	<p>Always wear ear protection when using power tools.</p>
<p>Eye Protection</p> 	<p>Ensure eye protection is always worn when cutting or drilling.</p>
<p>Manual Handling</p> 	<p>Do not attempt to lift bar assemblies or rock sliders on your own.</p> <p>Always use two people to lift or use mechanical Lifting aid such as hydraulic lifting trolley.</p>
<p>Vehicle Support</p> 	<p>Always ensure vehicle is properly supported when working on it. Do not attempt to fit products whilst suspension work is being carried out. Do not work under a vehicle supported only by a jack.</p>



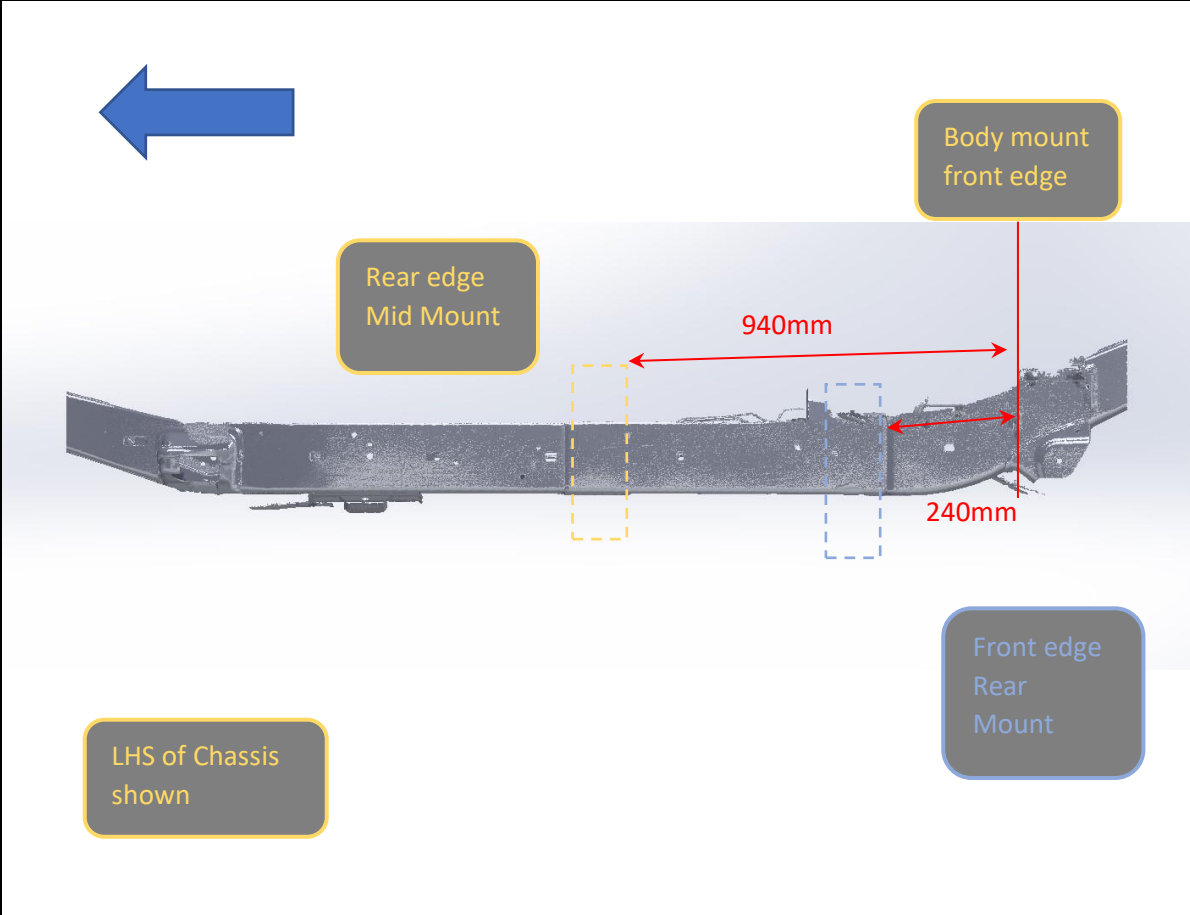
1. Remove Factory side steps if fitted by removing the 6x Bolts (2 Per mount) securing them to the body using a 12mm socket.
2. Discard Factory steps and bolts.

**TOOLS REQUIRED**

12mm socket

**FASTENERS**6x Factory Flange head Bolts  
(per side)



	
<ol style="list-style-type: none"><li>3. Locate and mark the mid and rear mount positions on chassis, as shown in above image.</li><li>4. You don't need to be exact close enough is fine as the mounts can connect to the step along it's entire length.</li></ol>	<b>TOOLS REQUIRED</b>  Marker
	<b>FASTENERS</b>



5. Middle mount shown on LHS of chassis. Push bracket up to chassis with shim plate between chassis and bracket as shown. Secure with M12x130 Hex bolt, washer, and flange nut. Push bracket all the way up and ensure top of bracket does not hit floor pan.
6. Bracket slides inside the brake and fuel lines near the chassis.
7. Tighten bolt so bracket is pinching hard on chassis

**TOOLS REQUIRED**

18mm Spanner

**FASTENERS**M12x130 (1)  
M12 FW (1)  
M12 FN (1)



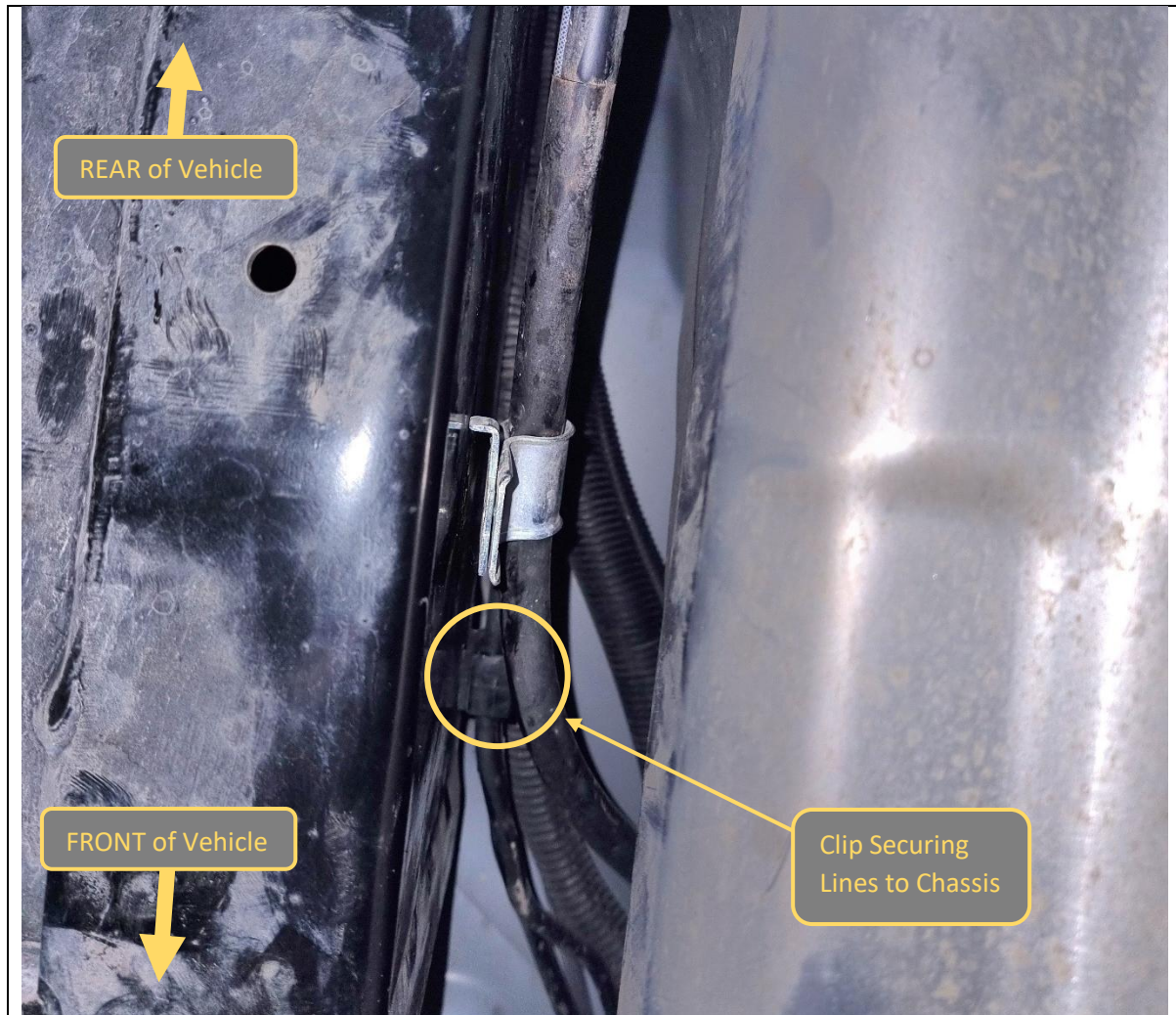
8. To fit rear bracket on LHS you need to lower the fuel tank.
9. To lower fuel tank, put a jack under the fuel tank and just touch the tank.
10. Remove 4 bolts (2 per strap) on holding fuel tank up
11. Gently lower tank down about 100mm with jack. Leave jack in place to support tank

**TOOLS REQUIRED**

14mm socket

**FASTENERS**





12. Some vehicles have a plastic clip securing fuel lines to the chassis, on the inside of the LH chassis rail in the location of the rear mount.
13. If vehicle is equipped with these lines, release the clip from the chassis using a trim tool.
14. When fitting the rear mount, ensure that the mount goes between the chassis and the lines. Ensure that the lines do not rub on the edges of the mount. Protect lines with conduit or similar if required.

**TOOLS REQUIRED**

Trim Tool

**FASTENERS**



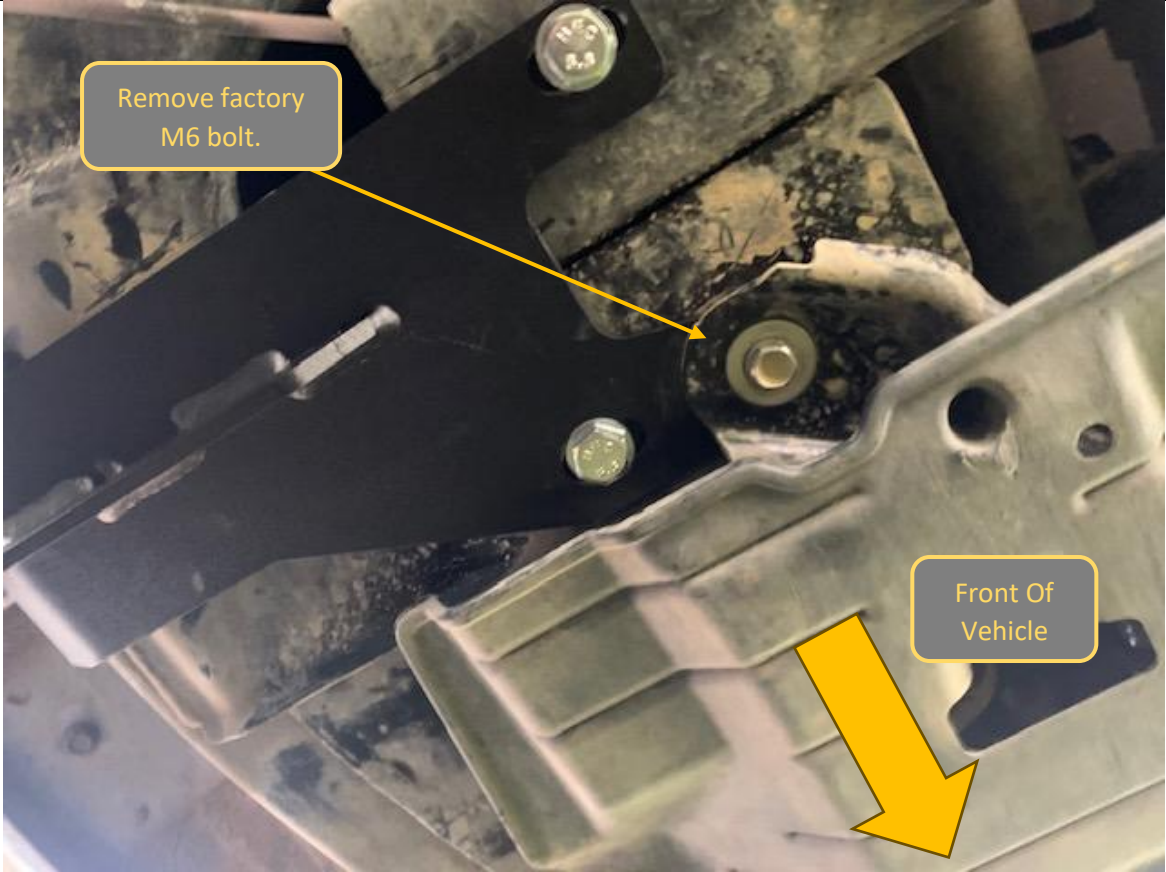
15. Fit rear mount with shim plate, push up as high as it will go and tighten the bolt until the bracket is pinching hard on chassis. Make sure top of bracket does not touch floor pan.
16. Raise fuel tank back up and secure with straps with factory bolts

**TOOLS REQUIRED**

18mm spanner, 14mm socket

**FASTENERS**

M12x130 (1)  
M12 FW (1)  
M12 FN (1)

	
<p>17. Install the front bracket as shown above. LHS of vehicle is shown in above image, looking from below and slightly behind mount location.</p> <p>18. Remove M6 bolt that is already in vehicle shown with arrow.</p> <p>19. Put bracket up to chassis as shown and reinstall factory M6 bolt. Leave loose.</p> <p>20. Using nut plate install M10 bolt on top side of photo, again leave loose.</p> <p>21. Next fit M10x30 bolt on bottom side of photo with flange nut. You may need to undo the factory M6 previously tightened before holding plastic guard to get nut into place. Leave loose at this stage.</p>	<b>TOOLS REQUIRED</b>  16 or 17mm socket/ spanner (depends on bolt supplier)
	<b>FASTENERS</b>  M10 x 30 (2) M10 FW (2) M10 FN (2)





22. Using the nut plate through the chassis window behind the bracket put a small bend in stick with your hand and then feed through window. Line up nut on plate with corresponding point on bracket and feed in M10x30 bolt and washer.

23. Once bolt has been started use a jack to hold the front of the bracket up as high as it will go while using a flat head screw driver to lever bracket as far away from centre of vehicle as possible. Then torque up the M10 bolt.

24. Remember this bracket need to be as high as possible in its slot.

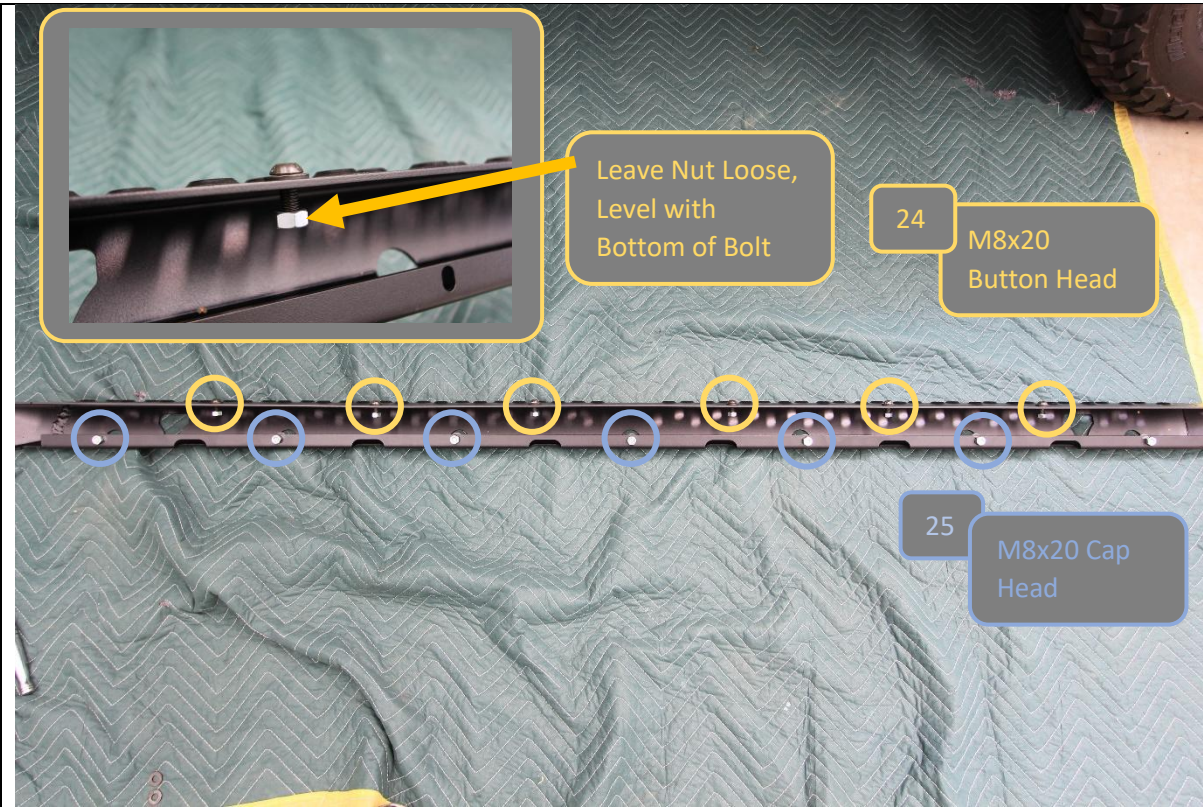
25. Torque 3 bolts underneath

**TOOLS REQUIRED**

16 or 17mm socket/  
spanner (depends on bolt  
supplier)

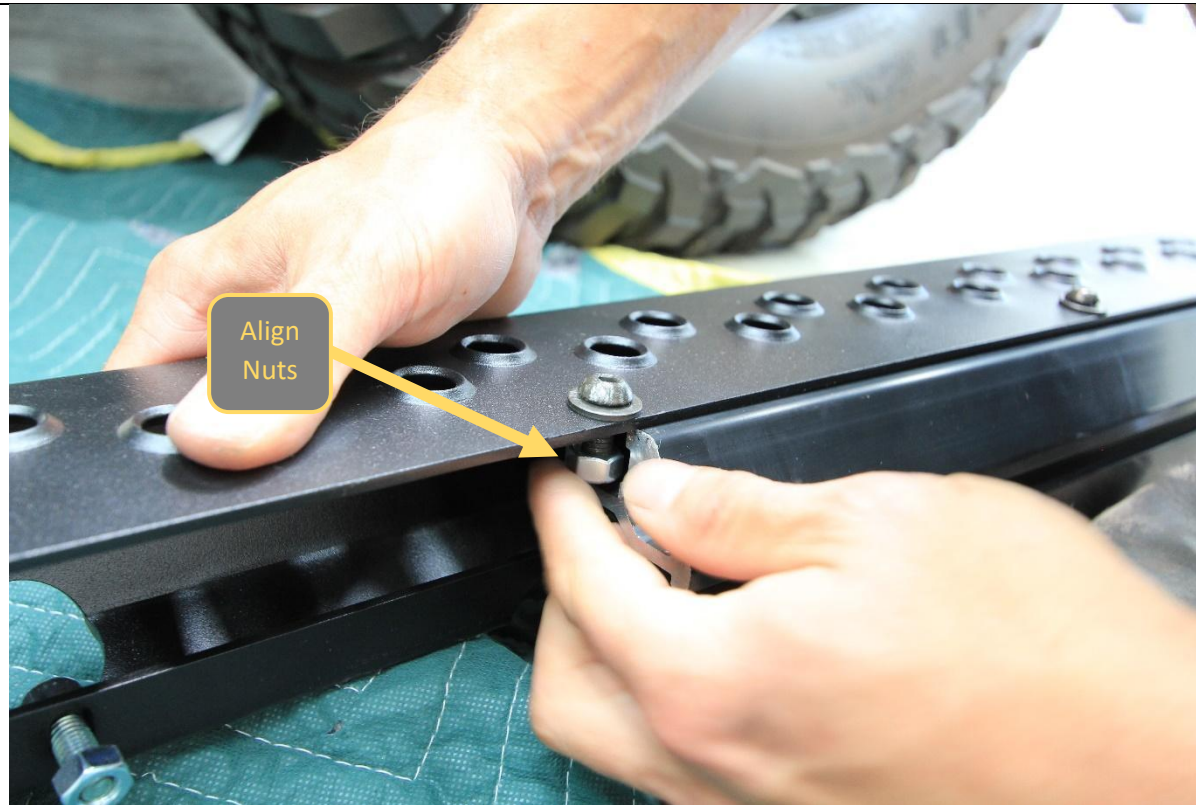
**FASTENERS**

M10 x 30 (1)  
M10 FW (1)



<p>26. Prepare step plate by loosely pre fitting the fasteners to the step</p> <p>27. Use M8x20 black button head screws, black M8 washers and M8 Nuts on 6x locations on top of step as shown</p> <p>28. Use M8x20 cap head screws M8 washers and M8 nuts on 7x locations on bottom side of step.</p>	<p><b>TOOLS REQUIRED</b></p>
	<p><b>FASTENERS</b></p> <p>6x M8x20 Black Button Head  7xM8x20 Cap Head  13x M8 Black Washer  13x M8 Nut</p>

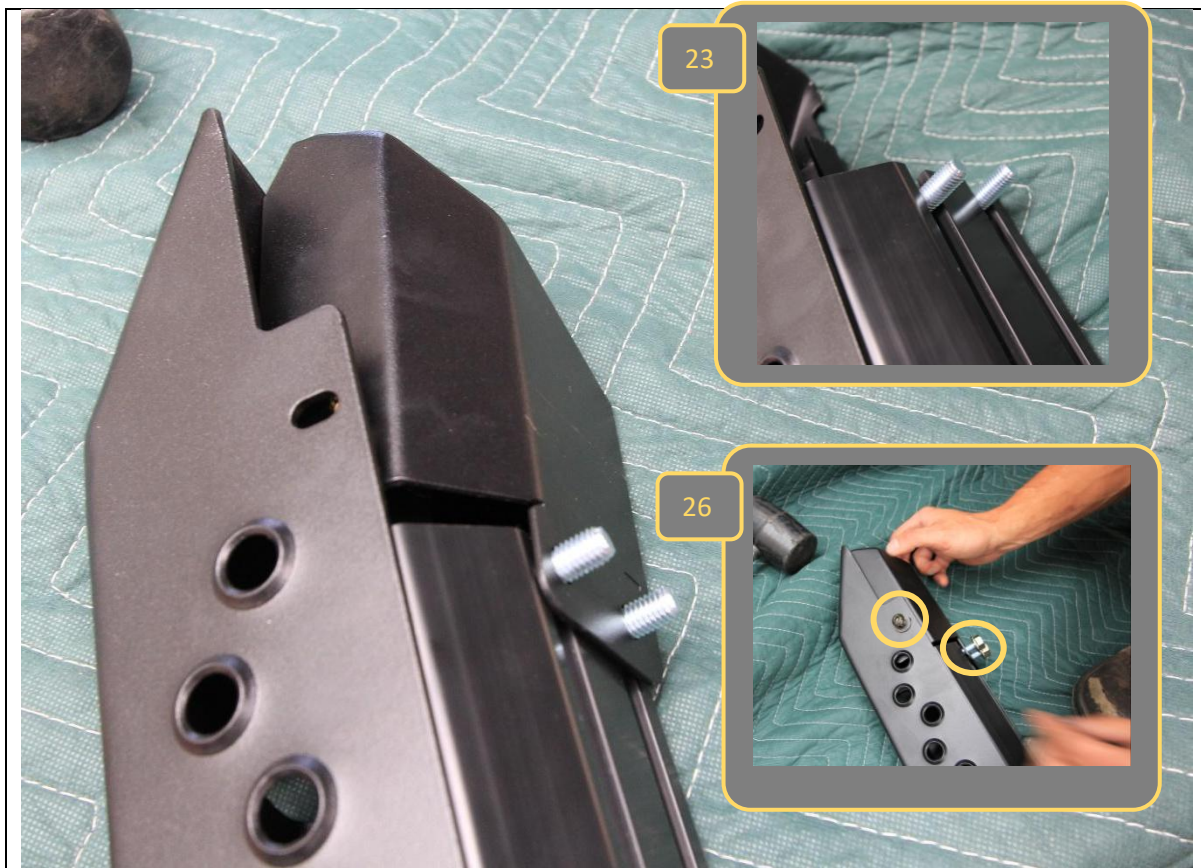




29. Slide the step plate onto the main slider structural extrusion. Align the nuts as they enter the T Slots on the extrusion.

30. Center the Step on the extrusion

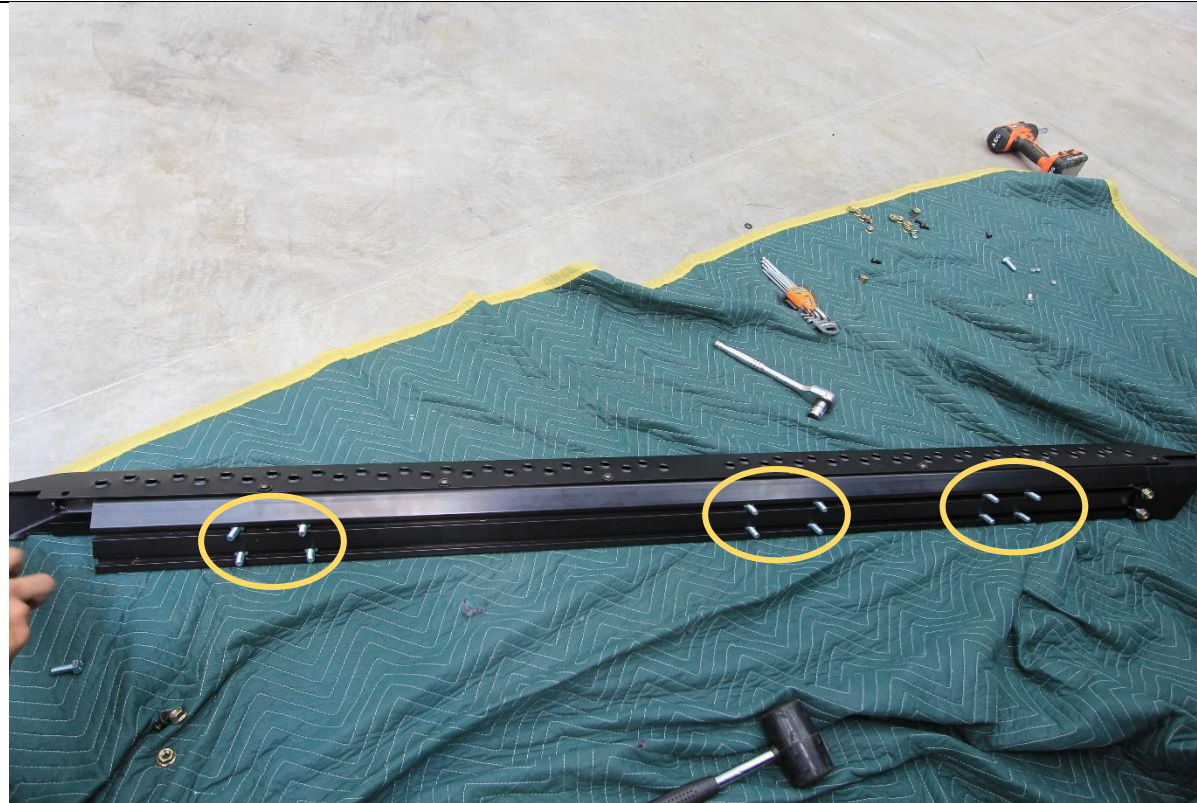
**TOOLS REQUIRED****FASTENERS**



31. Fit end cap to one end of the extrusion
32. First slide 2x M10x25 Hex bolts into the T slots on back side of extrusion.
33. Fit end cap over these bolts.
34. Secure with M10 flange nuts on T slot bolts and M8x20 bolt in top, through tread plate. End cap should align with end of tread plate if tread plate is centered correctly.

**TOOLS REQUIRED****FASTENERS**

2x M10x25 Bolts  
1x M8x20 Button Head bolt  
1xM8 Flat Washer  
2x M10 Flange Nut




35. Slide the 12x M10x25 Hex bolts into the T slots on back side of extrusion. 6 bolts per slot.

36. Loosely arrange the bolts in 3x groups of 4, in approximate location of mounts, as shown.

**TOOLS REQUIRED****FASTENERS**

M10x25 (12)





<p>37. Fit mirrored end cap to remaining end of slider, using 2x M10x25 hex bolts and M8x20 Button head bolt with flat washer as per previous steps 28-31.</p> <p>38. Check alignment of end caps, End cap should align with edge of tread plate if properly centered. Adjust end cap / tread plate position as required.</p> <p>39. Once happy with alignment tighten all bolts on slider extrusion, using 5/6MM hex key and 15mm spanner.</p>	<b>TOOLS REQUIRED</b>  5mm Hex key 6mm Hex key 15mm spanner
	<b>FASTENERS</b>  2x M10x25 Bolts 1x M8x20 Button Head bolt 1xM8 Flat Washer 2x M10 Flange Nut

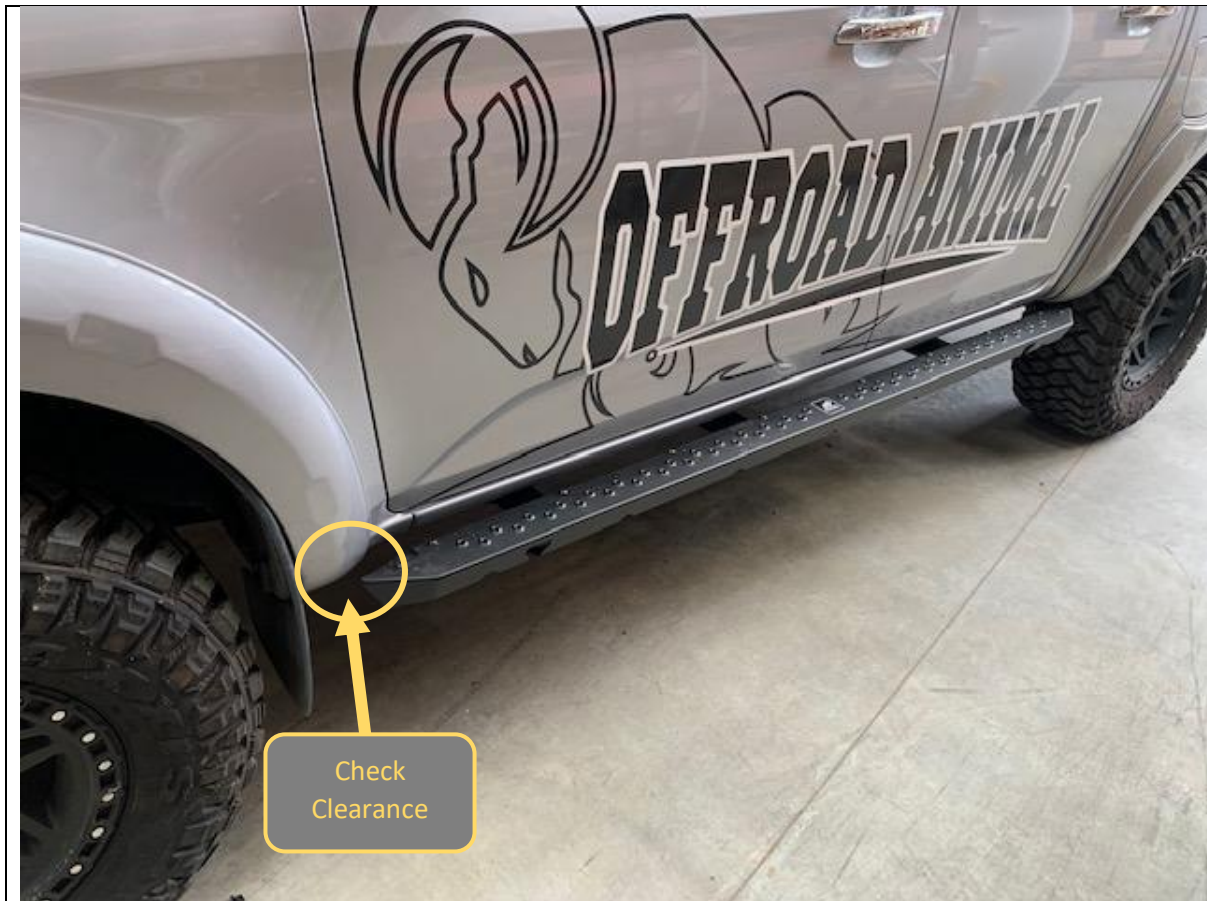


40. With the help of a friend or mate, lift step and extrusion up to brackets. Align all the bolts so they fit through the corresponding holes in the brackets.

41. Once all the bolts are through into the brackets, put flange nuts on bolts to hold step up.

**TOOLS REQUIRED****FASTENERS**

12x M10 Flange Nut



42. Adjust fore / aft position of sliders on mounts to achieve even appearance if required.
43. Take care to ensure adequate clearance where panel curves toward wheel at front end, near end cap.
44. Torque all M10 flange nuts.

**TOOLS REQUIRED**

15mm socket or spanner

**FASTENERS**





45. Don't be a stiff, put the supplied logo plates on the step as shown. It looks much better with it on.

46. Repeat entire install for RHS (easier side) and you're all done

**TOOLS REQUIRED****FASTENERS**



**Congratulations!**  
**Head for the tracks and enjoy your newly protected Ute!**